

**School guide 2020-2021**  
**SBO de reis van Brandaan**



**SBO de reis van Brandaan**  
**Kanunnikensven 1**  
**5646JD Eindhoven**  
**040-2111822**  
[info-reisvanbrandaan@skpo.nl](mailto:info-reisvanbrandaan@skpo.nl)

# Welcome

In front of you is the school guide of SBO de reis van Brandaan.

In this guide you can read about everything the school has to offer. The school guide is divided into three chapters; The school, the parents and the children.

The name of our school 'De reis van Brandaan ' is derived from an ancient old story. Brandaan was an Irish monk, who went on a voyage of discovery for the sole purpose of learning, of educating. Our school offers the opportunity to discover and learn in a way that suits you the best. Because on SBO de reis van Brandaan, every child is special.

For more information and updates from the groups and school, we would also like to refer you to our website: [www.dereisvanbrandaan.nl](http://www.dereisvanbrandaan.nl).

We are all very much looking forward to the new school year and wish everyone the very best.

## The school

### Who are we?

SBO de reis van Brandaan is a primary school for special learning.

When the educational needs of a child are more complex and intensive, and the supply and care of the primary school is insufficient, or when the pre-school facility advises accordingly; a child with a declaration of admissibility can follow education at our SBO-school.

We offer the children support in a specialized, remedial climate. To make this happen, our team is equipped with all pedagogic needs. Our modern school building, with its large green playground, supports this. Peace, structure, clarity and predictability are the base foundations.

We provide education that matches the individual potential of the child described in the development plan, for which we have high expectations. To support this, we provide offers that match the reference levels as described in the curriculum.

Our school is a developing community and centre of expertise where we work intensively and with the upmost care for the children. Our most important partners are the parents. In addition, we (together with the parents) connect all the dots of education and care for and around your child with youth assistance.

We strongly believe that every child can believe in him - or herself, now and in the future, so that they can grow up happily, successfully, and at their own pace, on their own voyage of discovery. Our core values are **personal growth, brave, all together and curiosity**.

Every day we welcome about 140 pupils (divided over 11 groups). We go to school from Monday to Friday from 8.30 am to 2.15 pm and on Wednesday from 8.30 am to 12.30 pm. The first bell rings at 8.20. The children then come in, so that we can start classes at 8.30 am. De dag is verdeeld in drie leertijden en tussendoor spelen en lunchen we samen.

The day is divided into three learning blocks broken up by dedicated breaks in which we play and have lunch together. Learning blocks 1 and 2 are scheduled in the morning. Here we mainly go through subjects such as reading, arithmetic, language, spelling or English. The children have better focus in the morning.

Learning block 3 is planned in the afternoon. This time is filled with a wide variety of developments such as science and technology, inquiry-based learning, integrated subjects (including history, geology, biology) and creative education. Each group has two hours of physical education by the subject teacher during the week. During the lessons 'social emotional learning' the children grow in their personality and social behaviour.

SBO de reis van Brandaan falls under the authority of SKPO, an ambitious organisation that has confidence in children and in each other. SKPO works from a collective ambition. We do this under the motto of *Learning with guts. More of yourself, more confidence, more outside the box.* This requires an intention that is widely shared and propagated, a structured foundation and a lot of guts. It also requires a professional culture in which, no matter what we do, we always ask ourselves whether or not it contributes to the realisation of promising, successful education for all our students. As professionals driven by passion, we, together with our partners, carry an open discussion to ensure the upmost quality. We do this driven by our core values; *development, individuality, responsibility and connection.* If you would like to read more about SKPO, please visit our website at [www.skpo.nl](http://www.skpo.nl).

The inspector for primary education in our region is Meriam Timmermans ([www.onderwijsinspectie.nl](http://www.onderwijsinspectie.nl)). The school is a member of the PO Eindhoven partnership. (3007 [www.po-eindhoven.nl](http://www.po-eindhoven.nl)).

## The team

### School principal

Geert van Stiphout

[g.vanstiphout@skpo.nl](mailto:g.vanstiphout@skpo.nl)

### Supervisors

Audrey Klunder (unit red)

[a.klunder@skpo.nl](mailto:a.klunder@skpo.nl)

Sonja Huugen (unit yellow)

[s.huugen@skpo.nl](mailto:s.huugen@skpo.nl)

Jacky Klerkx (unit blue)

[j.klerkx@skpo.nl](mailto:j.klerkx@skpo.nl)

### Group teachers

Red 1 Anouk van Wershoven

[a.vanwershoven@skpo.nl](mailto:a.vanwershoven@skpo.nl)

Red 2 Lianne Bonte

[l.bonte@skpo.nl](mailto:l.bonte@skpo.nl)

Heidi Lagendijk

[h.lagendijk@skpo.nl](mailto:h.lagendijk@skpo.nl)

Red 3 Lianne Bonte

[l.bonte@skpo.nl](mailto:l.bonte@skpo.nl)

Iris Vermeulen

[i.vermeulen@skpo.nl](mailto:i.vermeulen@skpo.nl)

yellow 1 Wendy Adriaans

[w.adriaans@skpo.nl](mailto:w.adriaans@skpo.nl)

Linda van Dijk

[l.vandijk@skpo.nl](mailto:l.vandijk@skpo.nl)

yellow 2 Jessica Triki

[j.triki@skpo.nl](mailto:j.triki@skpo.nl)

Soraya Broekmeijer

[s.broekmeijer@skpo.nl](mailto:s.broekmeijer@skpo.nl)

yellow 3 Ilse Hulsink

[i.hulsink@skpo.nl](mailto:i.hulsink@skpo.nl)

yellow 4 Conny Brouwers

[c.brouwers@skpo.nl](mailto:c.brouwers@skpo.nl)

Jacky Klerkx

[j.klerkx@skpo.nl](mailto:j.klerkx@skpo.nl)

Blue 1 Marisa Cornuit

[m.cornuit@skpo.nl](mailto:m.cornuit@skpo.nl)

Blue 2 Kim van de Laak

[k.vandelaak@skpo.nl](mailto:k.vandelaak@skpo.nl)

Sanne de Wert

[s.dewert@skpo.nl](mailto:s.dewert@skpo.nl)

Blue 3 Mark Schellekens

[m.schellekens@skpo.nl](mailto:m.schellekens@skpo.nl)

Blue 4 Vivian Renders

[v.renders@skpo.nl](mailto:v.renders@skpo.nl)

Sanne de Wert

[s.dewert@skpo.nl](mailto:s.dewert@skpo.nl)

### Educational assistants

Marjos van der Vleuten

[m.vandervleuten@skpo.nl](mailto:m.vandervleuten@skpo.nl)

Helma van Drunen

[h.vandrunen@skpo.nl](mailto:h.vandrunen@skpo.nl)

Reggy van Oorschot

[r.vanoorschot@skpo.nl](mailto:r.vanoorschot@skpo.nl)

### Physical education teacher

Jos Sijkens

[j.sijkens@skpo.nl](mailto:j.sijkens@skpo.nl)

### Rock and water trainer

Jessica Triki

[j.triki@skpo.nl](mailto:j.triki@skpo.nl)

Jos Sijkens

[j.sijkens@skpo.nl](mailto:j.sijkens@skpo.nl)

### Remedial Teacher

Maike Verhagen

[m.verhagen@skpo.nl](mailto:m.verhagen@skpo.nl)

### School substitutes

Jacky Klerkx  
Maïke Verhagen

[j.klerkx@skpo.nl](mailto:j.klerkx@skpo.nl)  
[m.verhagen@skpo.nl](mailto:m.verhagen@skpo.nl)

### Speech therapist

Johan Siebers  
Logopedistenpraktijk de Kempen  
Jolijn van der Pauw

[j.siebers@skpo.nl](mailto:j.siebers@skpo.nl)  
[info@logopediedekempen.nl](mailto:info@logopediedekempen.nl)

### Social Safety Coordinator

Jacky klerkx  
Conny Brouwers

[j.klerkx@skpo.nl](mailto:j.klerkx@skpo.nl)  
[c.brouwers@skpo.nl](mailto:c.brouwers@skpo.nl)

### Administrative assistant

Anke Notten

[a.notten-tuijelaars@skpo.nl](mailto:a.notten-tuijelaars@skpo.nl)

### Remedial educationalist

Sanne van der Vleuten

[s.vandervleuten@skpo.nl](mailto:s.vandervleuten@skpo.nl)

### Concierge

Hans de Vet

[h.devet@skpo.nl](mailto:h.devet@skpo.nl)

### Holidays and study days 2020-2021

Holidays and days off 2020-2021

Half term(autumn):	19-10-2020 to 23-10-2020
Christmas holidays:	21-12-2020 to 1-1-2021
Half term(spring):	15-02-2021 to 19-02-2021
Easter Holiday:	5-4-2021
May holiday & Ascension:	3-5-2021 to 14-5-2021
Whit Monday:	24-5-2021
Study week:	21-6-2021 to 25-6-2021
Summer holidays:	26-7-2021 to 3-9-2021

Before every holiday, the school is out on Friday at 12.30 pm.  
Every school year we plan study days to further professionalize ourselves.

The next study days are planned in school year 2020-2021:

Monday 5 October 2020  
Friday 5 February 2021  
Tuesday 25 May 2021

## School size

As of 1 October 2019 our school had 143 pupils.

## Goals of our education

We want to get the most out of our pupils, by offering the optimal development opportunities to suit each individual child, within a safe pedagogical climate. Pedagogically, educationally, philosophically and from a citizens' perspective and social integration.

## Quality assurance

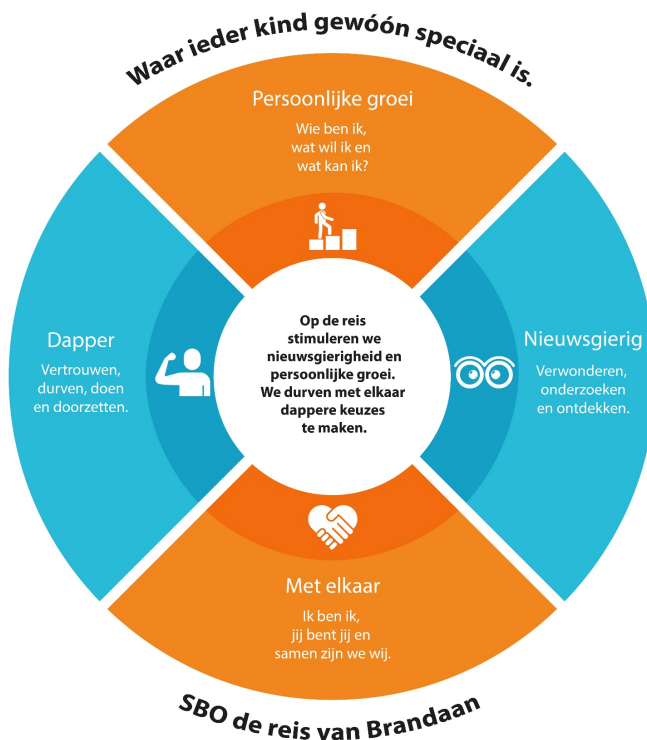
The goals for education on De reis van Brandaan stem from five pillars and are translated each year into a number of topics:

- Our children are allowed to shine
- Our school is fitting
- Our school has a primary task and a social position
- Our school is a developing organisation
- Our school profiles itself

We always wonder:

- What do our children think?
- What do our parents think?
- What do our employees think?
- What do our results and circumstances say?

## Mission and vision



***At de reis van Brandaan we stimulate curiosity and personal growth.  
We dare to make brave choices together.***

Our mission, vision, core values and strategy give our education the framework and structure from which we work. Our school is a special primary school for children from the ages of 4 to 13 years old. We are a school in which the offer of education for the pupils is tailored to match the needs and support to each individual. Our school is open to all pupils whose parents come to us for orientation after given advice from the primary school, as well as on the parents' own initiative. With us, there is no such thing as thinking in boxes. Rather, we look at the supportive needs of the child. If, after mandatory discussion with all parties involved followed by careful dossier research, we think that we can give an adequate solution to the supportive needs of the child, we are more than happy to welcome our new pupil. It is our goal to allow optimal growth for our students, so that they can move on to the next appropriate form of education. We achieve this by creating a development perspective plan (opp) and by frequent coordinating with everyone involved around the child; parents, school and (possible) youth assistance. We offer education based on a specific range per learning year, as described in the document 'leerstofaanbod op de reis van Brandaan'. Next to passing on knowledge and expertise, we spend a lot of attention to the big picture; a broad development. We do this, among other things, by using the method '3O-leren'. In addition, we stimulate the cultural, creative and physical development of the pupils. At our school we dedicate a lot of attention to learning to learn. We do this through the implementation and development of executive functions. In the educational field, we work with the children on becoming independent, self-management and self-confidence; the tools needed to further develop into well respected world-citizens.

During the past school year we have continued to work on our ambitions, reflected in our 2019-2020 annual plan.

- 1: Good education for every child.

\* The school has continued to develop its (ortho)educational activities through the ICALT and IGD school curricula.

\* Tailoring to instruction, time and processing has led to high interim results.

\* In each group tablets are used to enrich and explore (1 per 2 students).

\* Implementation of Positive Behaviour Support.

\* The teachers have developed competencies from leading and assisting, partly through the lessons inquiry-based learning.

\* Vocabulary education "Woordwijs op de Reis".

\* The results of arithmetic have been increased.

- 2: Our social mission now and our future.

\* Science and technology is engraved in our school. Investigative and inquiry-based learning is part of our offer. For the inquiry subjects, the (integrated) FAQTA method has been implemented.

\* ICT policy plan for the next 2 years has been developed.

\* Discussions have been held about the future of S(B)O in Eindhoven and what this can mean for the Eindhoven landscape.

- 3: Simple care structure, supporting the optimal development of the child.

\* The new development perspective plan (opp) has been implemented and evaluated.

- 4: Further development of our professional organisation in which we do the right things for children.

\* All employees of the school are developing as they go, allowing us to learn from and with each other.

\* Various team members follow training courses.

\* Team members lead accomplishment of ambitions of the year, from the perspective of the talent teams.

- 5: Connection.

\* Parents are our most important partner.

\* Diversity of partnership is possible and offered in the school.

\* The cooperation with Zorgokee (after-school specialized assistance) is set.

\* Further development into a centre of expertise.

In the school year 2020-2021 we will continue to work on our ambitions focussing on the following points:

- 1 -> Increasing opportunities:

100% implementation of the learning to learn educational line, increasing progress rate to VMBO/HAVO, vocabulary education, comprehensive reading, arithmetic education, , executive functions, increasing autonomy.

-2 -> Innovative education:

Further development of inquiry-based learning, implementation of the FAQTA method, implementation of the ICT policy plan. Implementing cultural policy plan.

- 3 -> Social emotional learning:



Interact with each other and yourself, further development Positive Behavior Support. Improve the executive functions.  
Further deepening trauma-sensitive education.

- 4 -> SO-SBO environment and school plan period 2020-2024.

- 5 -> Internationalisation

## Numbers

In the diagram below you can find the yields in skill-scores of the school leavers of the last 3 school years. In 2019-2020 we measure the yields with the CITO 3.0 tests. In previous school years we used the CITO tests for special students. Hence the difference in skill scores.

School year	Average IQ	DMT	Understand Reading	Arithmetic
2017-2018	72	90	74	32
2018-2019	82	84	80	29
2019-2020	77	75	201	154

In affect of the covid-19 period, the data for school year 2019-2020 are based on the yields of Jan 2020.

## Progression

At the end of the primary school period, the children move on to secondary education. Sometimes, children leave for regular - or another type of education during the school year. Below are the progression data for the past three school years:

	2017-2018	2018-2019	2019-2020
HAVO	0	1	0
VMBO	9	13	10
Practical education	17	10	17
VSO cluster 2	1	1	0
VSO cluster 3	1	1	0
VSO cluster 4	0	1	3
primary education	0	2	0
SBO	2	4	2
SO	2	1	2

# The parents

The parents (or guardians) of the children are our most important partner. Therefore, we would like to talk to each other as much as possible. This can be done in various ways: at the introductory evening at the beginning of the school year, after school hours, walking in, calling, scheduling an appointment, e-mail, twice a year on the report and development perspective plan conversations and school drop-out conversations. Sometimes parents have assistance at home. This assistance is welcome at school meetings/conversations, if preferred by the parents/legal guardians.

A few times per school year, parents are given the opportunity to experience and participate with the groups on our 'walk-in days'.

We are happy with parental support! At the beginning of each school year, parents can apply to offer additional help and/or support to certain areas. Throughout the school year, the teachers can also request extra help for planned activities.

We have an active committee of parents. If you would like to participate, you can contact the teacher of your child's group. He or she will assist you. If you would like to take part in the participation committee, please consult the website to find out who to contact.

## Agreements

We made arrangements at our school about:

- Interacting with each other from the standards and core values of the school. Safety, responsibility and respect. We have a code of conduct, see website.
- The AVG law on privacy. See document 'privacy statement', on our website.
- Reporting of absence. Call 040-2111822 before 8.30am or you can report via the school app.
- Compulsory education and educational leave. We maintain the compulsory education and leave regulations according to the guidelines of the municipality of Eindhoven (telephone 040-2382729).
- Timetable | Staying in. We have lunch in the group and play outside under the supervision of our own group teachers and employees.
- Destruction. We learn to treat the school's belongings with respect. Deliberate vandalism is punished and the costs will be on the parents and will not be covered by the school insurance.
- Medication, BIG-operations and accidents. Parents and the school arrange this together in advance, see protocol medical protocol and medication on our website.
- Telephones. These are handed in to the teacher at the beginning of the day and can be taken home at the end of the day.
- Money. To prevent issues, children are not allowed to bring money to school.
- Treats and healthy well-being. We see an increase of healthy, tasty treats being shared on days of celebration (birthdays). We support this development fully.
- Internet and social media. Parents are responsible for their child's use of social media. At our school we give lessons every year on how to use social media safely.
- General regulations regarding face-covering clothing. Employees, parents and children are not allowed to wear face covering clothing.

## Parents' contribution

The voluntary parental contribution for the school year 2020-2021 is 20 euros per student. We organize a Sinterklaas party, Christmas party, Easter party, sports day and a school trip. If it is not possible for you to pay this contribution, please contact Stichting Leergeld. Our aim is to organize a school camp for school-leavers at the end of their school period. For this, we depend on the contribution of the parents, which is set at 50 euros. At this moment we do not make use of sponsorship at school.

## Complaints; where can I go to?

Mistakes can be made everywhere. By talking about it in an open and honest discussion, in many cases we can tackle and correct the mistakes being made and prevent them from happening in the future. This is to be done by first reaching out to the teacher in question and/or the school principal. In some cases, there is reason to file a complaint, whether you are a parent, student or part of the parent-teacher committee. The school has designated procedures for complaints that indicate how complaints are being dealt with.

More information can be found on the website of the SKPO, [www.skpo.nl](http://www.skpo.nl). The SKPO is affiliated with the National Education Complaints Committee via 'Educational Disputes'. The contact details are as follows: Education disputes, P.O. Box 85191, 3508 AD Utrecht. Telephone: 030-2809590. Fax: 030-2809591. Email: [info@onderwijsgeschillen.nl](mailto:info@onderwijsgeschillen.nl).

There is a designated first point of contact at school for pupils and parents in the case of signals and complaints about abuse of power. The contact person at our school is Kim van de Laak, tel. 040-2111822. She is up to date about the complaints procedure and the resulting possibilities following the complaints. In case of serious complaints, the contact person refers to the external confidential advisor.

We have two regulations:

- Complaints about school matters in general
- Complaints of sexual harassment/unwelcome intimacies

Complaints about school-matters in general:

At first, you talk about your complaint(s) with your teacher. It is advised to make an appointment so that the appropriate amount of time can be taken to talk about the problem. If the group teacher is unable to come up with a proper solution, the principal will be informed. After internal consultation we will come back to you with a response.

If it concerns a general complaint, which does not concern a particular group, or if you feel that your complaint has not been adequately handled by the group teacher, you can go directly to the principal. Again: make an appointment, so that we can take the appropriate amount of time to talk about the matter.

In the third instance, if you feel that your complaint has not been dealt with accordingly, you can contact the internal contact person at the school.

Sexual harassment/Unwanted intimacy:

If, in your opinion, "sexual harassment" situations occur which you feel are not correct and wish to report, you can contact the internal contact person. She will give you advice and, if necessary, refer you to the principal. They can offer you the appropriate assistance.

The 'sexual harassment regulation' indicates how this is done and offers guarantees for proper treatment.

It goes without saying that we will do everything we can to make De reis van Brandaan a safe place.

## Collaborating with Partners

### Municipality of Eindhoven for transport requests

To request taxi transport, please contact the municipality of Eindhoven, Department of Student Transportation.

<https://www.eindhoven.nl/inkomen-zorg-en-onderwijs/onderwijs/leerlingenvervoer>

Or call: 14 040

### Speech therapy practice de Kempen

Our school has a branch office of speech therapy practice de Kempen.

Jolijn van der Pauw can, with referral for speech therapy, give treatment to children during school hours. This all-round practice works on speech-language development and paramedical care. Parents can join the treatment and Jolijn can easily consult with the teachers for the benefit of the child's development.

For more information: [www.logopediedekempen.nl](http://www.logopediedekempen.nl)

### Zorgokee

Zorgokee is located at our school. Zorgokee is an organisation that offers various forms of assistance, such as specialised group assistance, individual assistance and ambulatory assistance. This is offered to children with contact problems or children who need extra help in their social-emotional development.

Within the school SBO de reis van Brandaan, Zorgokee offers specialized group supervision.

This is an after-school group where the children can come to work on their goals in the field of their social-emotional development. In a playful way, children take steps forward in their development progress. In addition, practical support is given in the form of tips and tricks that children can use in situations they encounter on a daily basis.

Common goals they work on with children are:

- Learning to work together and play together
- Learning to consult
- Learning to deal with your emotions
- Learning to see your own potential
- Increasing self-confidence

Zorgokee also offers 'Education Care Packages'. Children who, due to circumstances, cannot be in the classroom for (full) days, can receive individual supervision from a Zorgokee supervisor during school hours. This supervision focuses, among other things, on

- Learning what your qualities and pitfalls are and how to tackle them.
- Learning to relax and discharge
  - Learning to deal with anger
- Develop insight in social situations

The main-goal is to get the student back to participate in his or her designated group.

### Opening hours Zorgokee

Monday	14:15 - 17:15 uur
Tuesday	14:15 - 17:15 uur
Wednesday	12:30 - 17:15 uur
Thursday	14:15 - 17:15 uur
Friday	14:15 - 17:15 uur

During study- and holidays they are open from 09:30 to 16:00.  
For more information, visit: [www.zorgokee.nl](http://www.zorgokee.nl) or call 0413-473034.

In cooperation with the school, student-discussions will take place to further assess and tailor the approach towards their goals.

### **GGD**

Our school works together with the Children's health team of the GGD Brabant-Zuidoost. The team consists of a pediatrician, nurse, assistant and health-promoting officer.

If the child is between the ages of 6 and 11, you will receive an invitation for a health examination. This takes place at school. During this examination, the Children's health Team will look at the physical, psychological and social development of your child. This consists of growth, weight, lifestyle, speech and language, school absence and behaviour. At the ages of 9 and 12, the GGD sends out invitations for vaccinations. The GGD can support the school in promoting healthy living and behaviour as well as projects, but can also set up lectures at school on various topics regarding health.

The GGD is happy to inform that every parent is welcome to make an appointment via [mijnkindendeggd@ggdbzo.nl](mailto:mijnkindendeggd@ggdbzo.nl) or call GGD Zuidoost at 088-0031414.

### **WIJeindhoven/Lumens**

The families of the children at our school sometimes have additional support and/or assistance from a generalist or assistant. This form of support could be in line with the conversations being held between the parents and school, but only if the parents/guardians wish to follow through. The result is that we keep the lines between the parents and the school short, benefitting the child's development.

For more information, visit: [www.wijeindhoven.nl](http://www.wijeindhoven.nl) or [www.lumenswerkt.nl](http://www.lumenswerkt.nl)

### **Dynamo Youth support**

Simon Leijten is a youth worker connected to our school. Simon makes the children enthusiastic by informing them about the fun activities that Dynamo organises after school. He also gives after-school technical activities that take place at school, for which children can sign up.

For more information: [www.dynamojeugdwerk.nl](http://www.dynamojeugdwerk.nl)

### **Speltherapie, psychomotorische therapie, ergotherapie, leesbegeleiding dyslexie**

Sometimes a child needs therapy. In this case, the parents, therapist and school can discuss whether the therapist can come to school, or the child goes through therapy outside of school.

# The Children

## Studentcare on De reis van Brandaan

At our school, every child is special.

The children of our school are placed with a declaration of admittance. In the pre-school program consisting of regular education or special education, it has been found that the child needs specialized support tailored to his or her development and educational needs.

In our school-support profile you can see which children are eligible to a place at our school. This document can be found on our website. We have no limitations, but invite parents, pre-school institutions and primary schools to discuss the school support profile with us. During this conversation we can explore and further discuss the possibilities at our school together.

Every child at our school has a development perspective plan (opp). The development perspective plan is an estimate of the development possibilities of a child projected for a longer period of time. In it we make a prediction about the expected outflow level for secondary education. This perspective is leading to the available offers and contains guidance for scheduling education for the child. The school and parents consult each other about this at the beginning of each school year to come to a mutual agreement. We always plan to follow up throughout the school year and at the end of the year we evaluate together.

We follow the children in the following ways:

- with the development tracking model for young children
- with the learning conditions for young children
- with method-relative tests
- method independent tests (CITO 3.0)
- with the social competence list ZIEN (pupils and teachers)
- with observations
- from conversations with parents and partners

From the care-routine of our school we work in a systematic way, according to the action-oriented working model. We use a planned curriculum, in which we have high expectations of children. Every day the teacher evaluates what the day has brought and what this means for the approach of tomorrow. Twice a year, the results are discussed during result-oriented discussions. The results are also evaluated at school level.

Put together this forms clear sense of direction, ensuring the adequate environment for a child to further develop him/herself.

## Offer

Children come to school to learn. To learn about yourself, learn within given subjects and to learn how to interact with each other. Our school stimulates the broad development of children so that they can develop themselves in all areas, respectively. Science and technology, research and inquiry-learning, Social Emotional Learning and creative education are, in addition to learning subjects such as arithmetic, language and reading, a clear part of our (specialised) school. We also work on the development of

children's executive functions. onze (gespecialiseerde) school. Verder wordt er gewerkt aan het ontwikkelen van de executieve functies van kinderen.

## School safety

Creating a great educational environment is something we do together. At our school we work according to the methodology of PBS. This stands for Positive Behaviour Support. This literally means: encouraging and promoting positive behaviour. The effects include that children feel safer and perform better. We work around three important words: **responsibility, safety and respect**. We teach children good behaviour, teach the importance of making their own right choices and reward good behaviour. Our pedagogic climate and approach has been assessed by the inspection with great credibility.

Teacher Conny and Teacher Jacky are the coordinators of social safety. All children know that they can always go to their own teacher if they feel teased or bullied. If they are unable to do so, the children know that they can always go to these two teachers as well. The main goal is to get the children back to feeling safe again. For more information we refer to the bully-protocol, which can be found on our website.

## Doing the right things, and doing things right

With a professional, enthusiastic team, we work together every day from the bottom of our hearts, to do the best things for every single child in our school.

Our team consists of 30 people: the group teachers, the support teachers, the teaching assistants, the PE teacher, the internal supervisors, the remedial educationalist, the behavioural experts, the school speech therapist, the language coordinator, the calculation coordinator, the Science and Technology coordinator, the Rock and Water trainers, the TOM (theory of mind) trainer, the Brainbloccs trainers, working memory coach, the children's yoga teacher, the social safety coordinators, SVIB (school video interaction supervisor), remedial teachers, the administrative assistant, the concierge and the school leader.

## In conclusion

Thank you for your interest in our school guide and our school.  
If there's anything we can do for you today, please let us know!